

Pace290 & MLT

Headset Dimensions

Top : ZS44
Bottom : ZS56

Seatpost Diameter

30,9mm

Shock Hardware

M8x40

Shock Bushings

22,2 x 8mm

Brakemount Standard

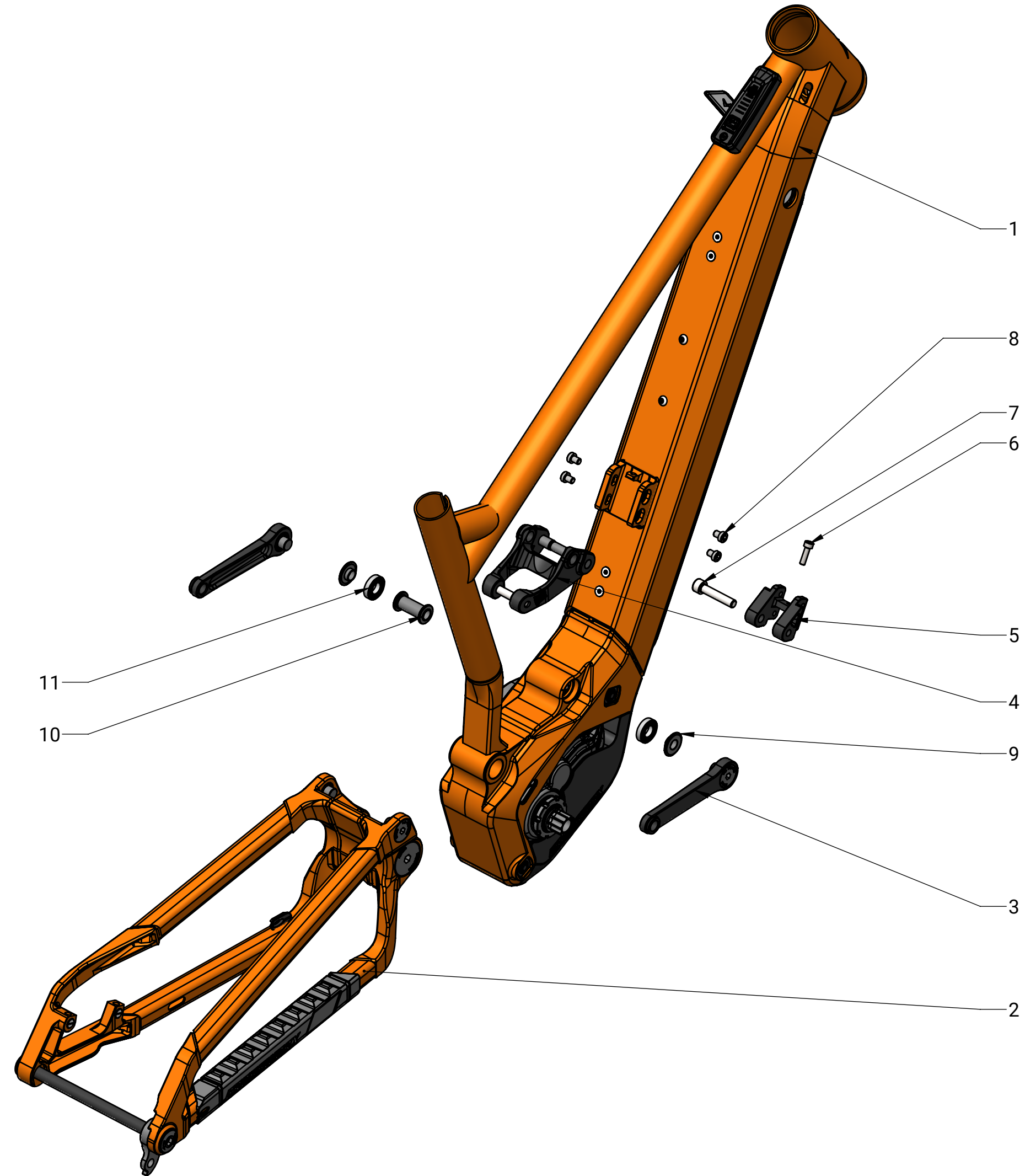
Postmount 180mm

Motormount Standard

Bosch Unified Lower

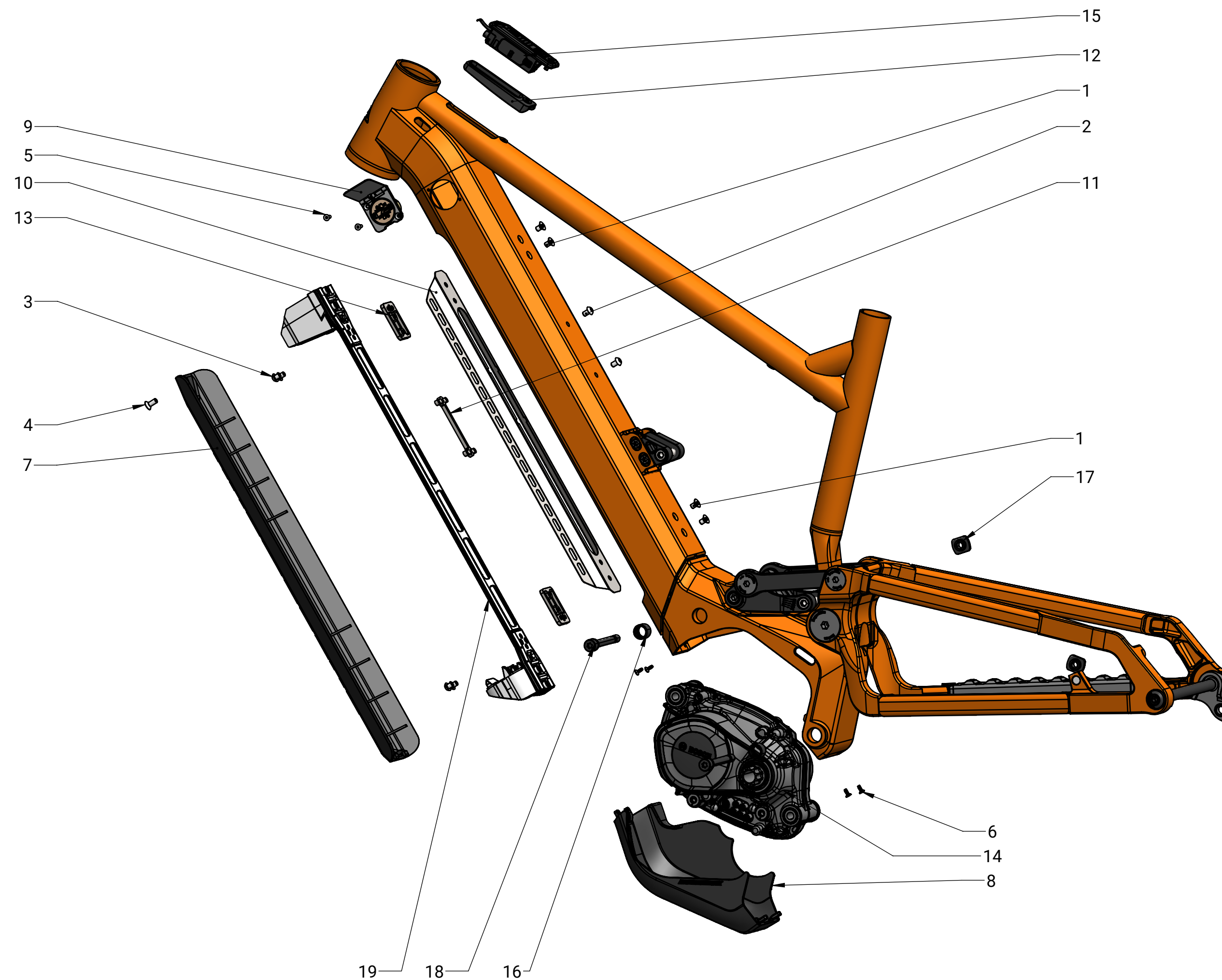
Minimum Insert Depth of Seatpost

100mm

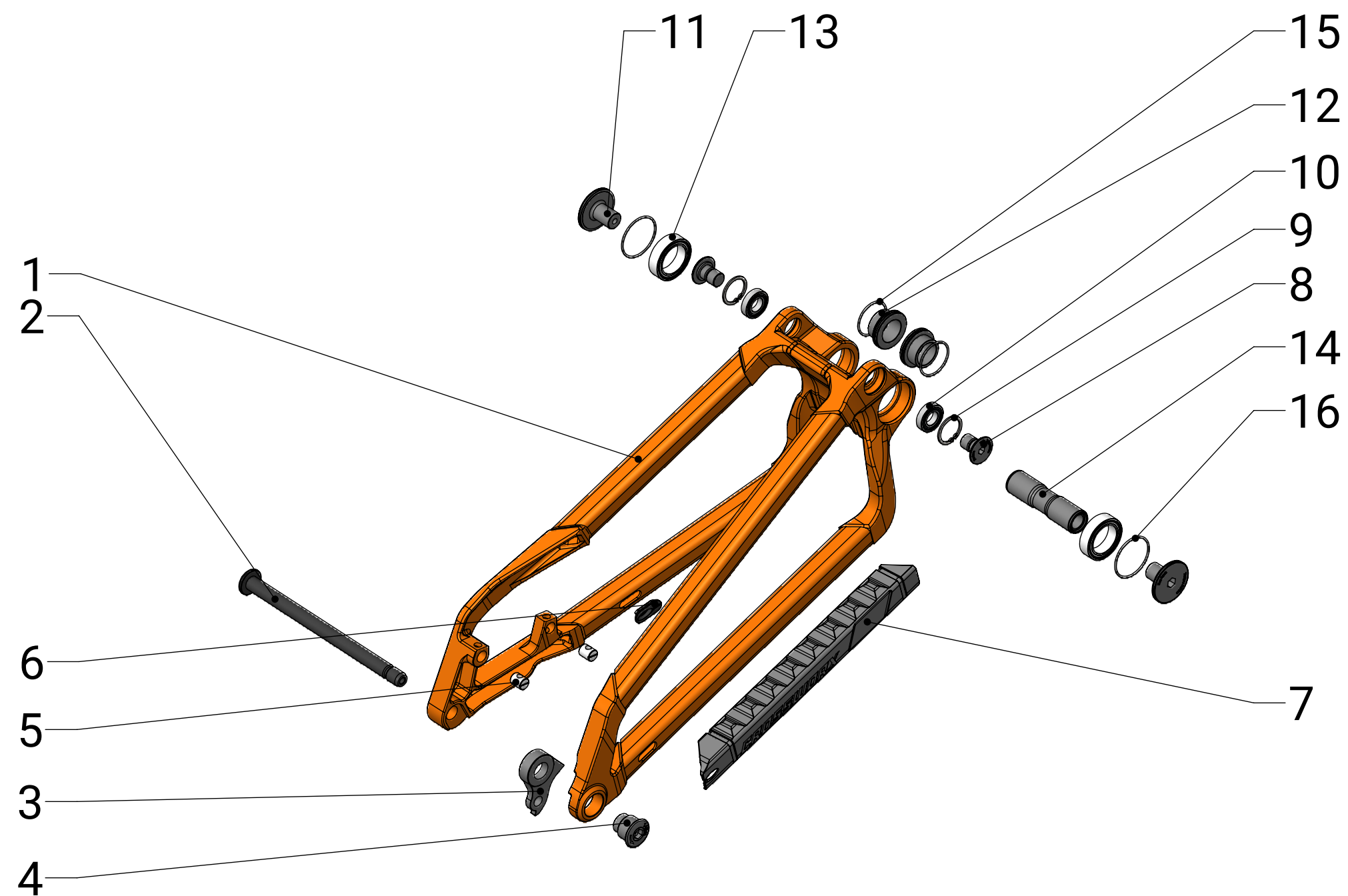


| Part List - Pace290 / PaceMLT : MainFrame | | | | |
|---|----------|------------------------------|------------------|--------|
| Pos | Quantity | Description | Article | Torque |
| 1 | 1 | Main Frame | | |
| 2 | 1 | Swing Arm Assembly | | |
| 3 | 2 | CWT PushRod Assembly | | |
| 4 | 1 | CWT Link Assembly | | |
| 5 | 1 | Shock Mount Top | CWT-SM-T | |
| 6 | 1 | Shock Mount Adjustment Screw | DIN912 M5x20 A2 | |
| 7 | 1 | Shock Screw | DIN912 M8x40 A2 | 10Nm |
| 8 | 4 | Shock Mount Screw | DIN7984 M6x10 A2 | 6Nm |
| 9 | 2 | Spacer | CWT-S | |
| 10 | 1 | Spacer Link | CWT-S-Link | |
| 11 | 2 | Bearing | 61901V-2RS | |

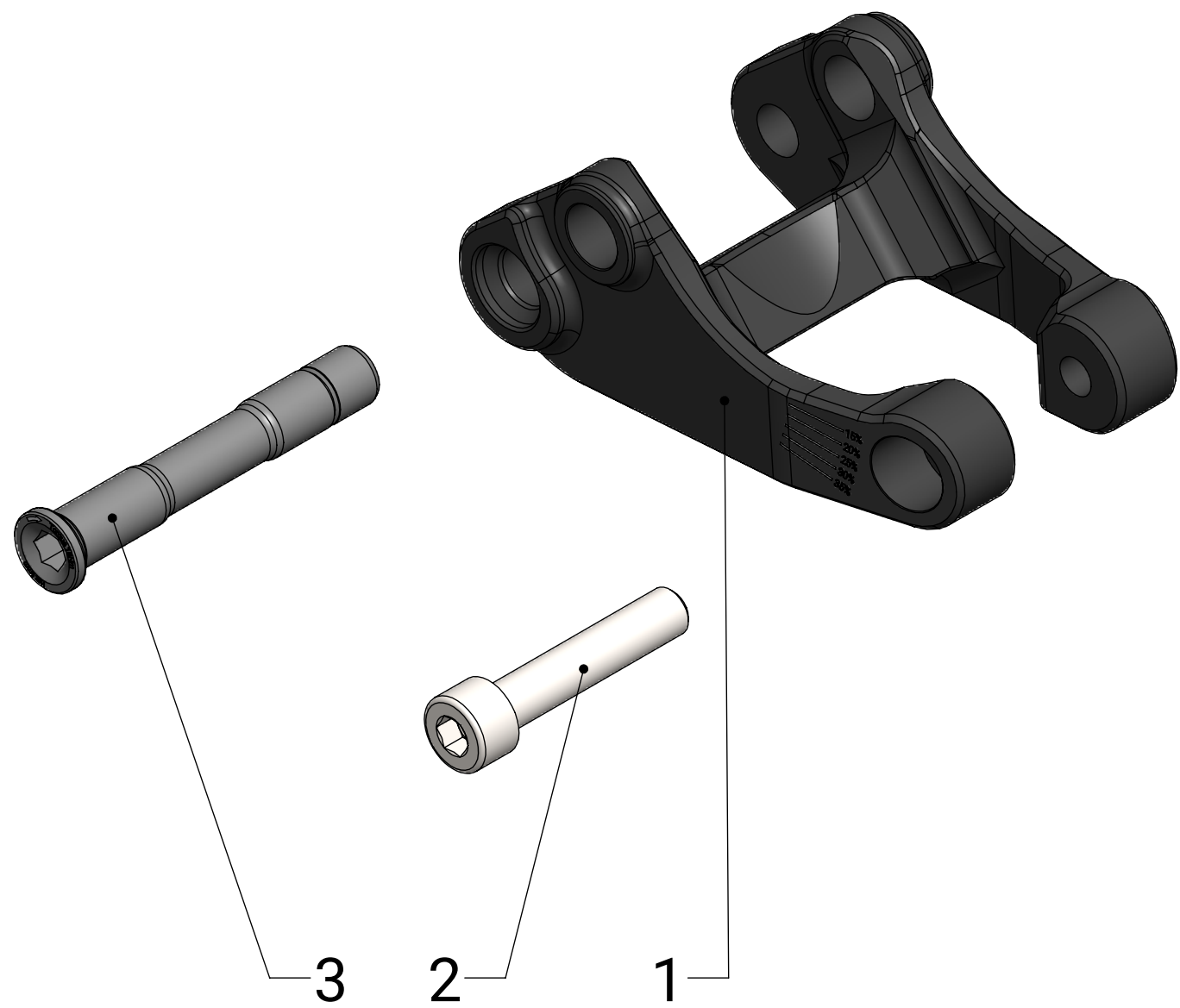
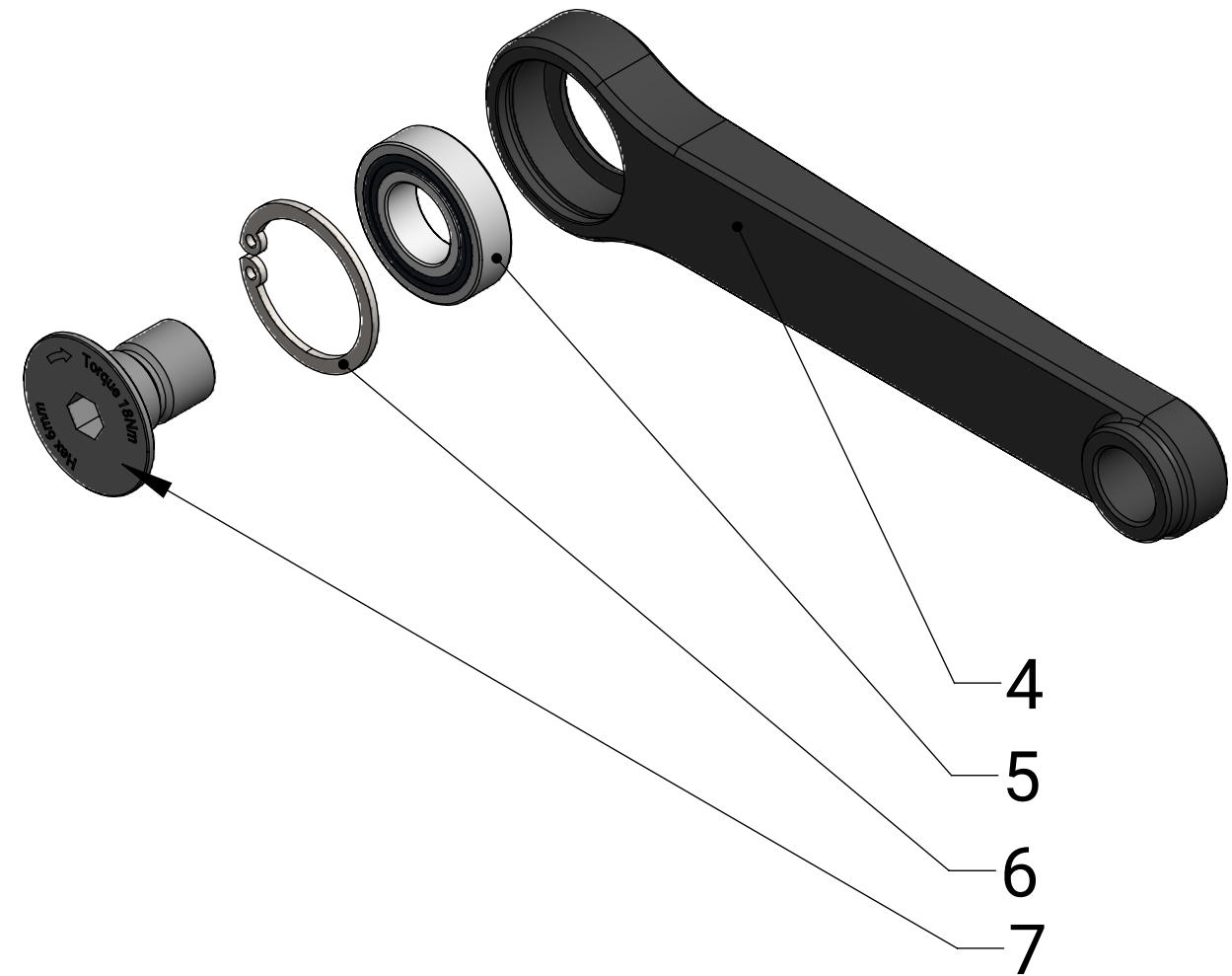
Pace290 & MLT



| Part List - Pace290 / PaceMLT : MainFrame | | | | | |
|---|----------|---------------------------|-------------------|--------|----------------|
| Pos | Quantity | Description | Article | Torque | Adhesive |
| 1 | 4 | Cable Rail Screw | DIN 7991 M5x8 A2 | 6Nm | Loctite Medium |
| 2 | 2 | Range Extener Screw | ISO 7380 M5x8 A2 | | |
| 3 | 4 | Battery Rail Screw | ISO 7380 M5x6 A2 | 6Nm | Loctite Medium |
| 4 | 1 | Battery Cover Screw | DIN 7991 M5x12 A2 | 2Nm | |
| 5 | 2 | Charge Port Screw | DIN 7991 M3x10 A2 | 2Nm | |
| 6 | 4 | Motor Cover Screw | STP410300080 | 1,4Nm | |
| 7 | 1 | Battery Cover | CWP-BC | | |
| 8 | 1 | Motor Cover | CWP-MC | | |
| 9 | 1 | Charge Port Assembly | | | |
| 10 | 1 | Cable Guide Sheet | | | |
| 11 | 1 | Range Extender Mount | | | |
| 12 | 1 | Adapter System Controller | CWP-TT-WOB | | |
| 13 | 2 | Battery Mount | CWP-BM | | |
| 14 | 1 | Bosch CX Motor | | | |
| 15 | 1 | Bosch System Controller | | | |
| 16 | 2 | Bosch Insert Socket | | | |
| 17 | 2 | Bosch Nut | | | |
| 18 | 2 | Bosch Motor Screw | | 30Nm | |
| 19 | 1 | Bosch PT Rail Assembly | | | |



| Part List - Dash/LiteMK2 - Pace290 - Trip290 : Swingarm | | | | | |
|---|----------|---------------------|----------------------|--------|-------------------------|
| Pos | Quantity | Description | Article | Torque | Adhesive |
| 1 | 1 | Swing Arm | CWC-Trip290-Swingarm | | |
| 2 | 1 | Rear Axle | CWC-A-178 | 12Nm | |
| 3 | 1 | Hanger | CWC-HNG-UDH | | |
| 4 | 1 | Hanger Screw | CWC-TS-UDH | 14Nm | |
| 5 | 2 | Cross Bolt M6 | Quergewindebolzen M6 | | |
| 6 | 1 | Plug 1x | CWC-Plug-1x | | |
| 7 | 1 | Chainstay Guard | CWC-Dash-CS-Guard | | |
| 8 | 2 | Bolt Pushrod | CWT-BLT-PSHRD | 18Nm | Loctite High Strength |
| 9 | 2 | Circlip | DIN472-24x1,2 | | |
| 10 | 2 | Bearing | 61901V-2RS | | |
| 11 | 2 | Bolt Main Bearing | CWD-BLT-Main | 22Nm | Loctite Medium Strength |
| 12 | 2 | Spacer Main Bearing | CWT-S-Main | | |
| 13 | 2 | Bearing | 3805-2RS | | |
| 14 | 1 | Axle Main | CWD-A-Main | | |
| 15 | 2 | Seal | O-Ring 28x1,5 | | |
| 16 | 2 | Seal | O-Ring 34x1,5 | | |



| Part List - Trip290/Pace290 : Pushrod & Link Assembly | | | | | |
|---|----------|--------------|-----------------|--------|-----------------------|
| Pos | Quantity | Description | Article | Torque | Adhesive |
| 1 | 1 | Link | CWT-Link | | |
| 2 | 1 | Shock Screw | DIN912 M8x40 A2 | 10Nm | |
| 3 | 1 | Axle Link | CWT-A-Link | 18Nm | Loctite High Strength |
| 4 | 1 | Pushrod | CWT-PSHRD | | |
| 5 | 2 | Bearing | 61901V-2RS | | |
| 6 | 1 | Circlip | DIN472-24x1,2 | | |
| 7 | 1 | Bolt Pushrod | CWT-BLT-PSHRD | 18Nm | Loctite High Strength |